

DATAforgeTM
Business Intelligence Redefined



Data Cleansing Project Scope



Project Scope

Implementing global indirect material inventory item creation and cleansing process for automotive tier 1 supplier:

- New items creation process
- Legacy item cleansing
- Customer Indirect Procurement and IT departments own the implementation of the business process and system that enables a uniform item coding procedure for new and legacy items
- IT and Indirect Procurement team will work with DATAForge team to implement this process and a Web-based catalog tool for submitting items for cleansing, updating Oracle and viewing item records that have been cleansed.



Workshop - Business Processes Review



Workshop

- Conducted a workshop to review all aspects of indirect material management with a cross functional team representing Engineering, Purchasing, IT, Plant Maintenance and Materials Management.
 - Review of current business processes, training, work instructions
 - Data samples and requirements
 - Language requirements
 - Participate in user's interviews
 - Review of processes that are working
 - What are the issues
 - Legacy system overviews
 - Review management expectations



Content Assessment



Content Assessment

- Unit of measure (UOM)
 - Disperse and purchase
- Plant and location codes (master and local views)
- Currency
- Class (noun) classifications
- Manufacturers, suppliers and/ or distributors
- Inventory classes i.e. production, services, product, repair, critical spare, order on request
- Evaluation of crib setup requirements i.e. storage locations, order points, min/max

Code	ISO UOM Code	English	Portuguese
	AM	ampoule	Ampola
	AY	assembly	Montagem
BAG	BG	bag	Sacola
	BL	bale	Fardo
	D92	band	Fita
	BAR	bar	Lingote
	BLL	barrel (US) (petroleum)	Barril (EUA)(petróleo, etc.)
	5B	batch	Maço
	E2	belt	Cinto
	2W	bin	Recipiente
	D64	block	Bloco
BDF	BFT	board foot	Pé quadrado de tábua
	D63	book	Livro
	BO	bottle	Garrafa
CX & BOX	CS	box	Caixa
	VQ	bulk	Carregamento
	BE	bundle	Feixe
	C0	call	Chamada
CAN	CA	can	Botijão
	CO	carboy	Garrafão
	CG	card	Cartão
CAR; CTN	CT	carton	Caixa de papelão
	CQ	cartridge	Cartucho
CX & CSE	CA	case	Caixa
CM	CM	centimetre	Centímetro



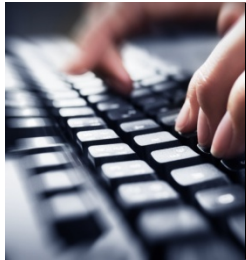
Content Assessment



Content Assessment (Cont.)

- Purchasing classifications
- References that should be carried over to new record –
Equipment # Location #
- Sub assembly components
 - Part information acquired, setup and ordered?
 - Comprehended during purchase planning?
- Functional equivalents
- Inactive / active (manufacturer / supplier designation)
- Excess and obsolete (Usage designation)
- Other content requirements

ITEM Cd	Category	Description
94	LAUNDRY & DRY CLEANING	
559	LUBRICATION	
3	MARKING	USE MARKING TOOLS
2529	MARKING TOOLS	Duplicate
49	Material de Ativo Fixo	
512	Material de Consumo e Expediente	
1188	Material de Manutencao	
1	Material Desenv. Projetos	
2879	MATERIAL HANDLING	
196	MEDICAL	
	MICROCLOTH	
72	MILL SUPPLIES	
4	OEM MACH REPAIR	Duplicate USE OEM MACHINE REPAIR
24575	OEM MACHINE REPAIR	
7	OEM MACHINE RERUPAIR	Duplicate USE OEM MACHINE REPAIR
2602	OFFICE SUPPLIES	
1028	OILS & GREASES	
2350	Outros Materiais	
323	PACKAGING	
910	PAINT & SUPPLIES	
1857	PERSONNEL SERVICES	
152	PHOTOGRAPHIC & X-RAY	
2	PLASTICS	Duplicate USE PLASTICS & RUBBER
588	PLASTICS & RUBBER	Duplicate
6034	PLUMBING	
3570	POWER TOOLS	
10918	POWER TRANSMISSION	
220	PRINTING	
255	PROMOTIONAL	
55	PROTOTYPE	
	PULL SUPPLIES	



Oracle Legacy System Update



Oracle Data Map

- Confirm fields that cannot be updated
- Determine legacy update templates: New Item, Change and Delete-Transfer (inactivate and referenced to new item)

Comment (Removed on actual Template)	Flag	Template	Inventory Item ID	Organization ID	Manufacturer Name	Manufacturer Part Number	Short Part Description (240 Char)	Long Part Description	Unit of Measure	Lead Time	UNSPSC	Purchasing Category	Brass Tag
<div style="display: flex; justify-content: space-between; align-items: flex-start; margin-bottom: 5px;"> ■ =Unchangeable</div> <div style="display: flex; justify-content: space-between; align-items: flex-start; margin-bottom: 5px;"> ■ =Reference</div> <div style="display: flex; justify-content: space-between; align-items: flex-start;"> ■ =From DATAForge </div>													
Scenario 1 - Update													
Update to an existing record	C		237091	252	SIEMENS ENERGY	5SX2104-7	CIRCUIT BREAKER - VOLTAGE RATING AND TYPE: 480 AC/DC VOLTS CIRCUIT BREAKER CURRENT RATING IN AMPS: 4 AMPERE [1] POLE TYPE: 1 POLE	CIRCUIT BREAKER - VOLTAGE RATING AND TYPE: 480 AC/DC VOLTS CIRCUIT BREAKER CURRENT RATING IN AMPS: 4 AMPERE [1] POLE TYPE: 1 POLE	PCS	42	39121601	ELECTRICAL & ELECTRONICS	606178
Update to an existing record	C		237091	251	SIEMENS ENERGY	5SX2104-7	CIRCUIT BREAKER - VOLTAGE RATING AND TYPE: 480 AC/DC VOLTS CIRCUIT BREAKER CURRENT RATING IN AMPS: 4 AMPERE [1] POLE TYPE: 1 POLE	CIRCUIT BREAKER - VOLTAGE RATING AND TYPE: 480 AC/DC VOLTS CIRCUIT BREAKER CURRENT RATING IN AMPS: 4 AMPERE [1] POLE TYPE: 1 POLE	PCS	42	39121601	ELECTRICAL & ELECTRONICS	BT607516
Update to an existing record	C		237091	678	SIEMENS ENERGY	5SX2104-7	CIRCUIT BREAKER - VOLTAGE RATING AND TYPE: 480 AC/DC VOLTS CIRCUIT BREAKER CURRENT RATING IN AMPS: 4 AMPERE [1] POLE TYPE: 1 POLE	CIRCUIT BREAKER - VOLTAGE RATING AND TYPE: 480 AC/DC VOLTS CIRCUIT BREAKER CURRENT RATING IN AMPS: 4 AMPERE [1] POLE TYPE: 1 POLE	PCS	42	39121601	ELECTRICAL & ELECTRONICS	
New setup for a plant at Local Level	N	Ind-Min/Max	237091	253	SIEMENS ENERGY	5SX2104-7	CIRCUIT BREAKER - VOLTAGE RATING AND TYPE: 480 AC/DC VOLTS CIRCUIT BREAKER CURRENT RATING IN AMPS: 4 AMPERE [1] POLE TYPE: 1 POLE	CIRCUIT BREAKER - VOLTAGE RATING AND TYPE: 480 AC/DC VOLTS CIRCUIT BREAKER CURRENT RATING IN AMPS: 4 AMPERE [1] POLE TYPE: 1 POLE	PCS	42	39121601	ELECTRICAL & ELECTRONICS	



Oracle Legacy System Update



Oracle Update Actions

- Create Oracle update scripts based on templates to add, update content, reference locations, etc.

C	Change - Record exists in Oracle, replace related values in Oracle with values from file
	- Record exists in Oracle, following steps in sequence
	- Action 1
	- Update manufacturer, part number, short description and long description at master level
	- Add/Update UNSPSC code at master level
	- Action 2
	- Determine existing org attachments for this record
	- Determine if new attachments required
	- Copy master to additional Org
	- Add brass tag reference if present

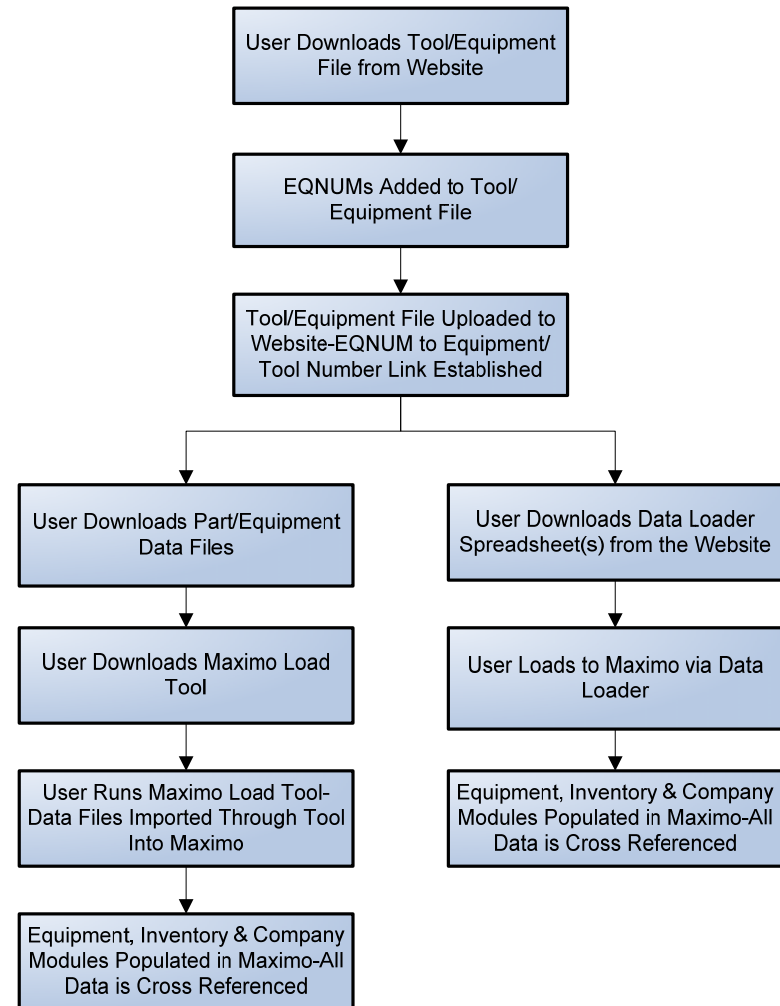
At Go-Live a complete data extract will be submitted and imported as a referential data set to support legacy item cleansing and ensure duplications are not set up.

MAXIMO Legacy System Update



Structured Data Export MAXIMO Export of Data Structured to Equipment and Plant Use Location

- Spare parts data can be location structured
 - Equipment Number
 - Plant
 - Department
 - Zone or Area
 - Station or Area
 - Unit (if applicable)
- Spare parts data is verified to the manufacturer with a technical long description
- Manufacturer contact information including web site URL's





Top Level Business Process

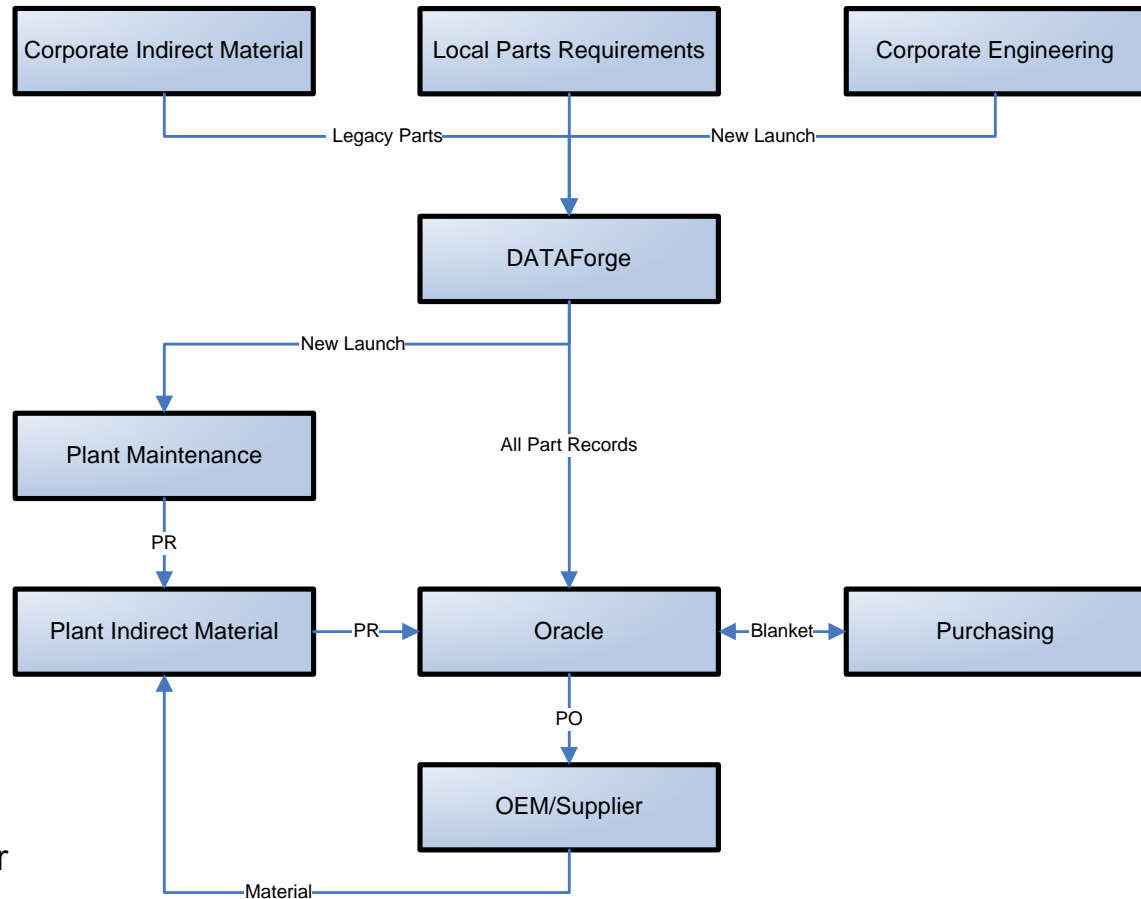


Business Process

This business process demonstrates the top level of the projected data flow between organizations.

Items Creation Process Specification

- One item master for the global organization with views created at the local view
- Duplication will be identified
- Items will be corrected item (part) numbers, manufacturers and descriptions managed through Oracle templates, new setup, inactive and reference or update.
- Update all required data elements.



Submitting Data for Coding



Submitting Data

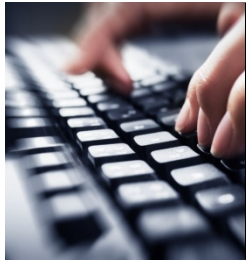
- OEM Name, OEM part number and OEM part description are required on every product record being submitted.
- Unit of Measure (UOM) is required for services.
- Remaining fields are optional:
 - Lead Time – lead time in days of the part.
 - Equipment – number that identifies the equipment the parts are on. For the same parts on multiple machines, use multiple rows.
 - Equipment description
 - Equipment company – manufacturer of the equipment.
 - Use quantity – The count of the components use on the equipment
 - OEM Contact, phone, email

Standard Web Import

Import Worksheet

Dataset Legend: **Type mismatch** **Size limit** Notes:

	OEM Name (required)	OEM Part Number (required)	OEM Part Description (required)
1			
2			
3			
4			
5			
6			



Submitting Data for Coding



Auto Email – Web Form Submission Report

Coding request submission, an email is automatically generated and sent to the user who submitted containing the items in the submittal.

	A	B	C	D	E	F	G	H
1	OEMName	OEMPartNumber	OEMPartDesc	Area	Equipment	EquipmentDesc	LeadTime	QNTY
2	TELEMECANIQUE	CAD32BD	RELAY SQUARE D CAD32BD, CONTROL RELAY 24 VDC COIL, 3NO & 2NC CONTACT (BGI REF: TELEMECANIQUE)					
3	TELEMECANIQUE	XCS-Z01	KEY TELEMECANIQUE XCS-Z01 ACTUATING STRAIGHT MACH NAME OERLIKON S/N 292103,104,137-139 BT 606130-132,140,141 MDL C28 FACE HOB					



Data Cleansing Import Process



Import Process

- Initial profiling and import analysis uses pre-programmed stored procedures to evaluate item numbers and descriptions; determine manufacturer part number, manufacturer name and part description.
- Import process – auto-recognized previously verified items by utilizing the history of the master database and reference to the legacy customer data source
- Data history tracking
 - Part history tracking with complete change history
 - Date imported
 - Who submitted
 - File name and reference items to file
 - Revision level (engineering)
 - Physical location association
 - Equipment association



Setting up the Identification Guide



Creating an Identification Guide

- The eOTD Identification Guide Class is setup with properties to describe the item and are listed in relevant sequence order for description build.

CLASSES **CLASS PROPERTIES**

Edit Class Properties: SCREW, SHOULDER

Revert Changes Apply Changes Add Property

Sequence	ESPI	Property Name	UserName	In Use
1	0161-1#02-025101#1	TYPE	Jackie Roberts	<input checked="" type="checkbox"/>
2	0161-1#02-014657#1	MATERIAL	Jackie Roberts	<input checked="" type="checkbox"/>
3	0161-1#02-060195#1	FINISH	Jackie Roberts	<input checked="" type="checkbox"/>
4	0161-1#02-024700#1	HEAD STYLE	Jackie Roberts	<input checked="" type="checkbox"/>
5	0161-1#02-024177#1	THREAD SIZE	Jackie Roberts	<input checked="" type="checkbox"/>
6	0161-1#02-003567#1	DRIVE SIZE	Jackie Roberts	<input checked="" type="checkbox"/>
7	0161-1#02-008790#1	SHOULDER DIAMETER	Jackie Roberts	<input checked="" type="checkbox"/>
8	0161-1#02-008798#1	SHOULDER LENGTH	Jackie Roberts	<input checked="" type="checkbox"/>
9	0161-1#02-024142#1	THREAD LENGTH	Jackie Roberts	<input checked="" type="checkbox"/>
10	0161-1#02-004962#1	HEAD DIAMETER	Jackie Roberts	<input checked="" type="checkbox"/>

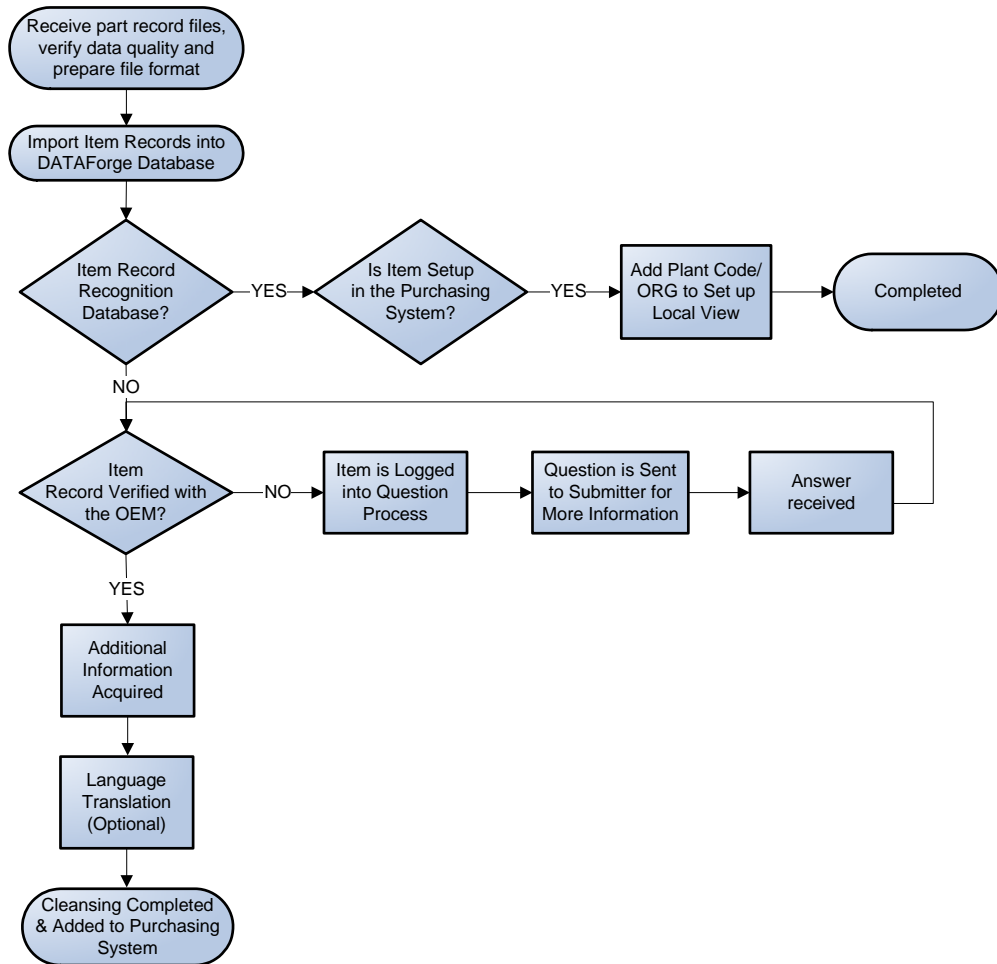


DATAForge Data Cleansing with Verification Process



Data Cleansing Process

- Import process to reference existing Items
- Classify all parts to eOTD standard naming convention
 - Class naming (bearing, taper)
 - Required attributes
- Analytics
 - Removal of duplicates
 - Identify record Inconsistencies
- Cleansing
 - Verification to original manufacturer
 - Acquire additional information as required, such as price, warranty, lead time, etc.
- Language translation
- Export to purchasing and/or maintenance system





Items Setup and Enrichment



Data Item Setup Process

- Contact OEM and verify manufacturer, part number and part description ensuring the information is accurate
- Verify to original manufacturer
- Manufacturer contact information updated
- Acquire attributes, estimated price, lead time and warranty

Part Edit

Core Attributes

Hazardous Material Obsolete

Part Number 3/8-16 x 3/4 x 3/4 *

Manufacturer

UOM PACKAGE

UOMQTY 2 UNSPSC 31161517

ECCN EAR99 Lead Time

Classification NSN

MFR Price 10.85 Currency U.S. Dollar (USD)

MFR Warranty Type N/A MFR Warranty Length -1
(-1:N/A 0:Lifetime)

Part Description

Generated Part Description
SCREW, SHOULDER - | TYPE: HEX HEAD | MATERIAL: 18-8 STAINLESS STEEL | FINISH: PLAIN | HEAD STYLE: HEX | THREAD SIZE: 3/8-16 INCHES | DRIVE SIZE: 3/4 INCHES | SHOULDER DIAMETER: 1/2 INCHES | SHOULDER LENGTH: 2-1/2 INCHES | THREAD LENGTH: 3/4 INCHES | HEAD DIAMETER: 3/4 INCHES | HEAD HEIGHT: 1/4 INCHES | SHOULDER LENGTH TOLERANCE: ±0.005 INCHES | MINIMUM TENSILE STRENGTH: 80,000 POUND-FORCE PER SQUARE INCH | CLASS: 2A | HARDNESS RATING: B85 TO B95 ROCKWELL A | PACKAGE QUANTITY: 2

Image:

Document

Client Attributes DATAForge Clients:

Building the a Verified Part Description to the Identification Guide



Building the Part Description

- eOTD properties are listed with the requirement of UOM. The ECCMA UOM tables are in an auto suggest selection box for the coder to select.
- The description is automatically generated to the sequence of class properties.

Part Description

PART DESCRIPTION: SHOULDER SCREW

GENERATED DESCRIPTION: SCREW, SHOULDER - | TYPE: HEX HEAD | MATERIAL: 18-8 STAINLESS STEEL | FINISH: PLAIN | HEAD STYLE: HEX | THREAD SIZE: 3/8-16 INCHES | DRIVE SIZE: 3/4 INCHES | SHOULDER DIAMETER: 1/2 INCHES | SHOULDER LENGTH: 2-1/2 INCHES | THREAD LENGTH: 3/4 INCHES | HEAD DIAMETER: 3/4 INCHES |

Language: English Class Name: SCREW, SHOULDER [Search] [Save]

Property Name	Property Value	Unit Of Measure	Data Type
TYPE	HEX HEAD		String
MATERIAL	18-8 STAINLESS STEEL		String
FINISH	PLAIN		String
HEAD STYLE	HEX		Enumeration
THREAD SIZE	3/8-16	INCHES	Unit of Measure
DRIVE SIZE	3/4	INCHES	Unit of Measure
SHOULDER DIAMETER	1/2	INCHES	Unit of Measure
SHOULDER LENGTH	2-1/2	INCHES	Unit of Measure
THREAD LENGTH	3/4	INCHES	Unit of Measure



Question Process when item is NOT Verified



Questions Process

- When verification of an item record is unsuccessful, the item record is submitted to the question process.
- The item record history is logged with time, date, who submitted.
- The data analyst logs who was contacted with contact information and the issue why the verification could not be acquired.

The screenshot displays the DATAforge Question Utility interface. The top navigation bar includes 'Item Search', 'Company', 'Question Utility', 'Planning', 'Maintenance', 'Data Upload/Download', 'Admin', and 'My Account'. The main content area shows a list of items with columns for 'Part Number', 'Part Description', and 'Manufacturer'. Two items are visible:

Usage	Part Number	Part Description	Manufacturer
Usage	B.31217938	HEMMING STEELS TKDN PN: B.31217938	THYSSENKRUPP KRAUSE GMBH
Question ID	5	Question: Sent to info.krause.de@thyssenkrupp.com for part verification several times and have not gotten a response back. Please provide a valid EMAIL, Phone or Fax number in order to verify this part.	
Answer:			
Usage	B.31308272	CENTERING PIN TKDN PN: B.31308272	THYSSENKRUPP KRAUSE GMBH
Question ID	6	Question: Sent to info.krause.de@thyssenkrupp.com for part verification several times and have not gotten a response back. Please provide a valid EMAIL, Phone or Fax number in order to verify this part.	
Answer:			



Question Process User Notifications



Questions Process

- Each evening all questions (highlighted in yellow) are sent to the submitter as notification that the analyst requires addition information.

10/13/2010 03:03 AM

Submit Daily Report

for User

OEMPart Number	Submitted Part Number	Submitted Manufacturer	Service Flag	Sub Inventory	Min	Max	Multiplier	Area	Equipment	QNTY	OEMName	Note
	CBK-XO	Allen Bradley	No	57	0	0	0		620436	1		Plant 7 Spare Parts 9/15/2010
Location: GEAR INDIRECT												
OEMPartDesc												
Submitted Part Description Hole Plug												
Question This part belongs to ABB Inc. But per Anita @ ABB, this is not a valid part number. They have a "CBK-XP", but not "CBK-XO". Is this the correct part number? Please advise.												
OEMPart Number	Submitted Part Number	Submitted Manufacturer	Service Flag	Sub Inventory	Min	Max	Multiplier	Area	Equipment	QNTY	OEMName	Note
	GOAPFS-15	Daykin	No	57	0	0	0		620436	1		Plant 7 Spare Parts 9/15/2010
Location: GEAR INDIRECT												
OEMPartDesc												
Submitted Part Description Dissconnect transformer												
Question Per Barbra @ Daykin(603-456-4470), this is an invalid part number. Please provide a valid part number in order to verify and code.												



Completed Item



Notification to User

- As items are verified, descriptions built and enriched, each evening the submitter is notified via email with Excel report.

Update to Oracle

- Items are added, updated or delete transferred to the master organization
- The plant local view and inventory storage is also setup.

Submit Daily Report

for User -

OEMPart Number	Submitted Part Number	Submitted Manufacturer	Service Flag	Sub Inventory	Min	Max	Multiplier	Area	Equipment	QNTY	OEMName	Note
CDQ2B100-100DM-M9BL	CDQ2B100-100DM-M9BL	SMC	NO	PDI STORES	1	1			B-15		SMC	
Location: PANTNAGAR DRIVELINE INDIRECT--PANTNAGAR DRIVELINE MASTER												
OEMPartDesc		CYLINDER:PNEUMATIC - CYLINDER TYPE: COMPACT AIR MOUNTING TYPE: THROUGH HOLE BORE: 100.00 MILLIMETERS STROKE: 100.00 MILLIMETERS ROD END STYLE: MALE CUSHION: NO CUSHION GENERAL CHARACTERISTICS ITEM DESCRIPTION: AUTO SWITCH-SOLID STATE, GENERAL PURPOSE, 2 WIRE, HORIZONTAL, 0.5M										
Submitted Part Description		C(D)Q2, Compact Cylinder, Double Acting, Single Rod										
Question												
OEMPart Number	Submitted Part Number	Submitted Manufacturer	Service Flag	Sub Inventory	Min	Max	Multiplier	Area	Equipment	QNTY	OEMName	Note
CDQ2A100-150DCM-M9BL	CDQ2A100-150DCM-M9BL	SMC	NO	PDI STORES	1	1			B-12		SMC	
Location: PANTNAGAR DRIVELINE INDIRECT--PANTNAGAR DRIVELINE MASTER												
OEMPartDesc		CYLINDER:PNEUMATIC - CYLINDER TYPE: COMPACT AIR MOUNTING TYPE: BOTH ENDS TAPPED BORE: 100.00 MILLIMETERS STROKE: 150.00 MILLIMETERS ROD END STYLE: MALE CUSHION: RUBBER BUMPER GENERAL CHARACTERISTICS ITEM DESCRIPTION: AUTO SWITCH-SOLID STATE, GENERAL PURPOSE, 2 WIRE, HORIZONTAL, 0.5M										
Submitted Part Description		C(D)Q2, Compact Cylinder, Double Acting, Single Rod										
Question												



Reporting



Reporting

➤ Many options for reporting based on the information we collect through our data processes, some of the report options:

- Project Status
- Cost-savings to Date
- Duplicate Report
- Bar Code Label

Question List 6/9/2009

Plant: Plant Assembly
Program: IndirectM-and-E
Department: WFG
Date: 6/9/2009
Contents: 13 questions on parts received for coding.

Question Count	Zone	Number of Questions (Q2)	Number of Questions (Q3)
N/A		13	0
TOTAL:		13	0

1: Q2 Question reviewed and approved to be sent out
 2: Q3 Unable to resolve without plant specifications

Plant: GPSC **Department:** WFG **Program:** IndirectM-and-E

MTL ToolLog Report 6/9/2009 03:57 PM

Program: Plant Assembly 900 Line

MTLD ID	MTL ID	Zone	SL_Tool	Station	Tool Number	Required	Comments	QNTY	Releas	Tool Log Tool	Stage	Date	Days Late	Assign To	Reference
16374	557	E	T74833A	116	T77843	12/23/2008		1		T77843	Completed	6/8/2008	107	ADAMS	4168
16374	557	E	T74833A	116	T77843	12/23/2008		1		T77843	Completed	6/27/2008	108	DURHAM	4375
16374	557	E	T74833A	116	T77843	12/23/2008		1		T77843	Completed	7/18/2008	307	DURHAM	4453
20266	557	E	T74833A	5	MAA19800 S	7/18/2005		1	001	maa19800sa	Completed	2/27/2008	951	ROSE	4845
20273	557	E	T74833A	10	MAA19807 L	7/18/2005		1	001	maa19807s	Completed	4/3/2008	353	ADAMS	2355
22408	557	E	T74833A	50	MAA18568 L	12/23/2005		1		MAA18568L	Completed	2/13/2008	12	WALKOWSKI	2914
36508	1112	Exterior		27-032	MAA10003 LD	5/31/2008		001		MAA10003LD	Completed	5/31/2008	0	ADAMS	4072
36508	1112	Exterior		27-032	MAA10003 LD	5/31/2008		001		MAA10003LD	Completed	3/28/2007	307	APPEL	5829
		sterior		27-032	MAA10003 LD	5/31/2008		002		MAA10003LD	Completed	5/18/2007	114	WALKOWSKI	6875
		sterior	17-BX-008	MAA21127 SB	9/22/2008			001		MAA21127SA	Completed	5/31/2008	114	ADAMS	4072
		sterior	17-BX-008	MAA21127 SB	9/22/2008			001		MAA21127SA	Completed	9/22/2008	0	APPEL	4810
		sterior	17-BX-008	MAA21127 SB	9/22/2008			001		MAA21127SB	Completed	5/31/2008	114	ADAMS	4072
		sterior	17-BX-008	MAA21127 SB	9/22/2008			001		MAA21127SB	Completed	9/22/2008	0	APPEL	4810
		sterior		27-033	MAA21128 LC	11/7/2008		001		maa21128L	Completed	5/18/2008	112	WALKOWSKI	2807
		sterior		27-033	MAA21128 LC	11/7/2008		001		maa21128L	Completed	11/6/2008	0	APPEL	4648
		sterior		27-033	MAA21128 LC	11/7/2008		001		maa21128LA	Completed	11/10/2007	114	APPEL	4648
		sterior		27-033	MAA21128 LC	11/7/2008		001		maa21128LB	Completed	5/18/2008	112	WALKOWSKI	2807
		sterior		27-033	MAA21128 LC	11/7/2008		001		maa21128LB	Completed	11/21/2008	114	APPEL	4648
		sterior		27-033	MAA21128 LC	11/7/2008		001		maa21128LC	Completed	1/24/2007	114	APPEL	4648
		sterior		27-033	MAA21128 LC	11/7/2008		001		maa21128LD	Completed	2/13/2007	114	APPEL	6109
		sterior		27-033	MAA21128 LC	11/7/2008		002		maa21128L	Completed	9/25/2008	114	APPEL	4648
		v		010	T78073	12/23/2004	P/P ASM	1		T78073	Completed	2/19/2007	58	DURHAM	6238
		v		020	T78075	12/23/2004	CLAMP UNIT	1		T78075	Completed	2/19/2007	58	DURHAM	6238

Part Number	Department	Assembly
0365-3548	Use Code	10157
Noun Name	Address	F-24
FUSE	Rack	ASSY 2
Card Number (Ver1)	Bin	B-1 ELECT
1 of 2	Unit Measure	PCS

Part Number	Department	Assembly
0365-3548	Use Code	10157
Noun Name	Address	F-24
FUSE	Rack	ASSY 2
Card Number (Ver1)	Bin	B-1 ELECT
2 of 2	Unit Measure	PCS



Testing



Beta Testing

- Testing groups included IT, central purchasing and global plant locations
- Each location tested submitting requests to code to ensure accuracy of locations, sub-inventories and crib setup information.
- Test each type of update to Oracle and local view setups per location.
- Test template update action and notification to purchasing:
 - New adds requiring new contract setup
 - Inactivated item requires removal of item from contract
 - Update items requires contract update

Training

- Training documents and Web-ex training classes were set up.

Go Live

- Go Live to move into production and a notice of decision of the new process.



Questions

DATAforge[™]
Business Intelligence Redefined

Questions?